

Protech TF Tape

GAS PROTECTION

DESCRIPTION

Protech TF Tape is an extruded tape designed for use on timber frame constructions to act as a gasket where the fixings penetrate the gas membrane or starter band.

KEY FEATURES

- Good adhesion to a wide range of substrates.
- Easy and accurate to use with little waste and no mess.
- The softer composition makes this product highly conformable.
- Remains flexible throughout its service life.
- High tack.

APPLICATION

PROPERTIES

Roll size: 1.5mm x 100mm x 15m
4 rolls per pack. 50 boxes per pallet.

Colour: Black

Application temperature range: +5°C to +40°C

Shelf life: 24 months when stored flat in original packaging in cool, dry conditions.

INSTRUCTIONS

Surface preparation: All surfaces should be clean, dry and free from frost, grease and loose materials. When cleaning contaminated substrates, A. Proctor Group recommend that propan-2-ol (IPA) is used and allowed to dry prior to the application of the Protech TF Tape tape.

Application: Apply direct from the reel onto one surface and press sufficiently along its whole length to achieve good initial adhesion. Remove backing paper and offer other surface to the Protech TF Tape and push firmly to seal across the joint. The use of a roller to roll the joint, using firm pressure, is recommended to get a good bond.

TOLERANCES

Rectangular sections:

Thickness: ±10%
Width: up to 25mm ±2mm
26mm to 100mm ±2mm

Bead sections:

Thickness: ±10%
Width: ±10%

PERFORMANCE

Characteristic	Test Method	Unit	Nominal Value
Dynamic Tensile Adhesion	H5	N/cm ²	19
Dynamic Shear Adhesion	H15	N/cm ²	13
T-Peel Adhesion to 250 micron PE membrane	H45	N/cm	12
Specific Gravity	DIN EN ISO 10563	-	1.6
Moisture Vapour Transmission Rate	ISO9932 / BS ISO 15106	g/m ² /24hr/mm	0.16
Service Temperature Range		°C	-40 to +90



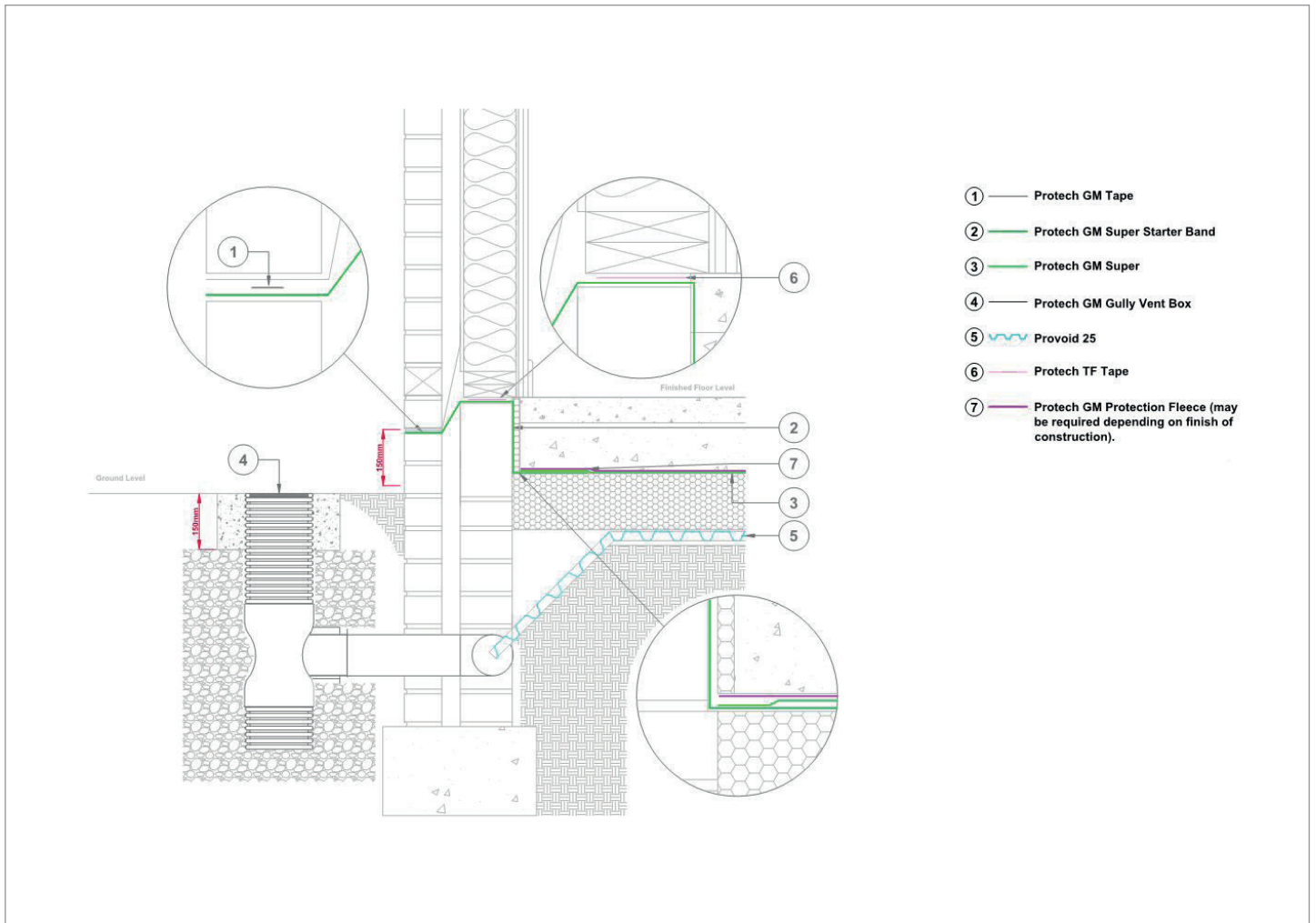
nssPlus



Protech TF Tape

GAS PROTECTION

STANDARD DETAIL



- ① — Protech GM Tape
- ② — Protech GM Super Starter Band
- ③ — Protech GM Super
- ④ — Protech GM Gully Vent Box
- ⑤ — Provoid 25
- ⑥ — Protech TF Tape
- ⑦ — Protech GM Protection Fleece (may be required depending on finish of construction).



nssPlus

