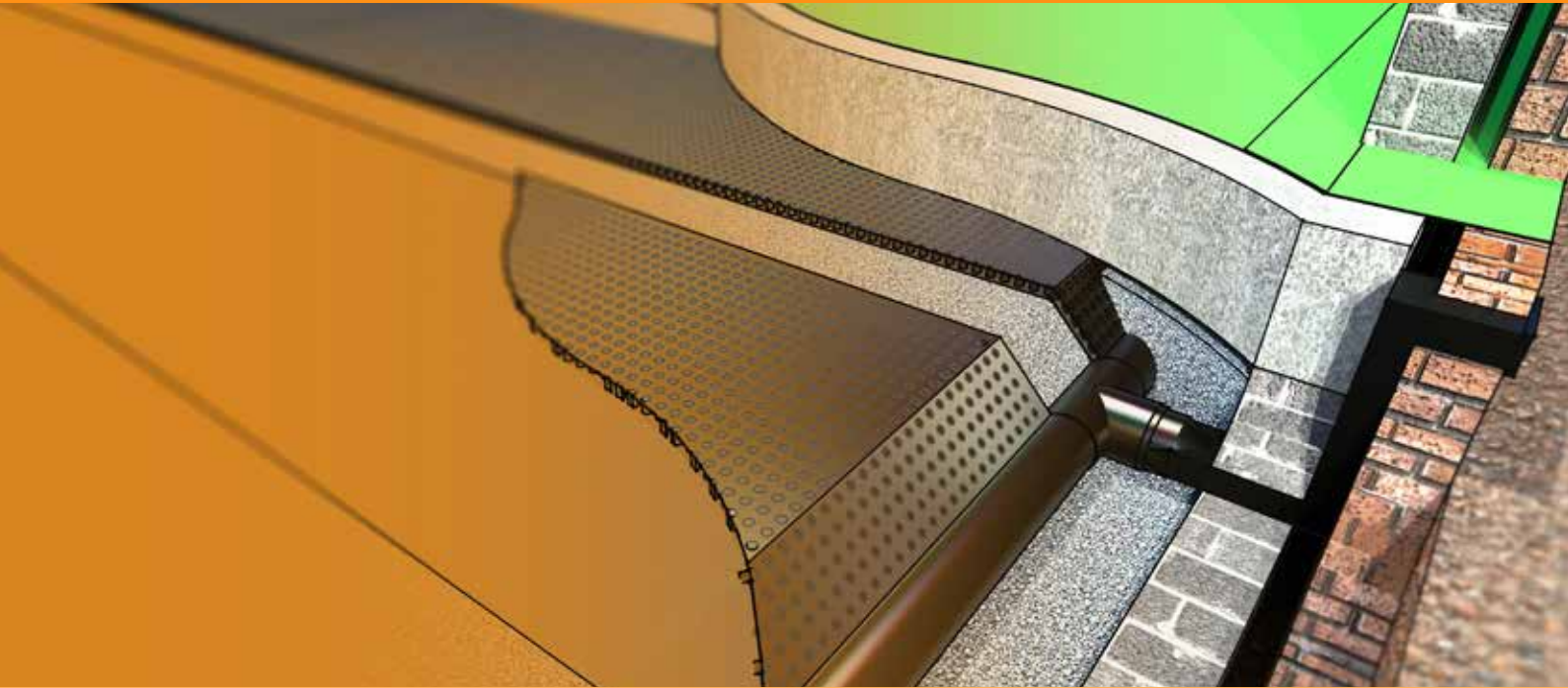


Protech GM Accessories

GROUND GAS PROTECTION



INTRODUCTION

Both the British Standard BS8485:2015 and the CIRIA C735 guidance document emphasise the importance of on site verification to ensure design performance targets for gas membrane systems are met. In order to achieve this, good installation and site practices are increasingly important. To assist contractors in meeting the strict guidance given in the most recent standards documents, the A Proctor Group supplies a wide range of membrane accessories to ensure the installation process is both simple and robust.

PROTECH GM ACCESSORIES



PROTECH GM FLASHING

Product Code: A31210 / A31211

Protech GM Flashing Strip is a waterproof and gas resistant tape protected by an aluminium film and reinforced with a polyester film. Used for detailing stanchions, corners, penetrations and repairs.

**Dimension: 150mm x 10m (A31210)
300mm x 10m (A31211)**

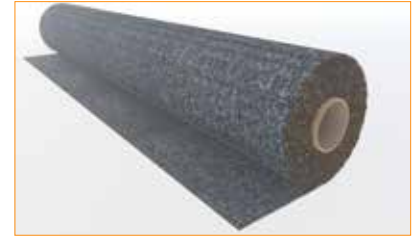


PROTECH GR-DPC

Product Code: A30212

Protech GR-DPC is a gas resistant DPC used through junctions with cavities or masonry to protect against the ingress of gas and damp.

Dimension: 600mm x 20m



PROTECH GM PROTECTION FLEECE

Product Code: A32005

Protech GM Protection Fleece used to protect the integrity of the Protech Gas Membranes from follow on trades or from sharp protrusions in made ground.

Dimension: 1m x 50m (A32005)

*non-stock item



PROTECH SAGM

Product Code: A30203

Protech SAGM is a self adhesive gas and waterproofing membrane for use in detailing and vertical installation applications.

Dimension: 1.05m x 19.05m x 1.5mm

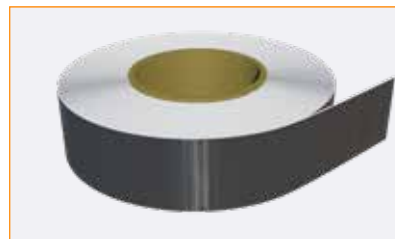


PROTECH GM PRIMER

Product Code: A31220

Protech GM Primer is used in conjunction with Protech SAGM and Protech GM Flashing in order to consolidate the substrate and ensure complete bond development. Protech GM Primer is supplied as a single pack brush applied liquid coating.

Dimension: 5 litre



PROTECH FOIL LAP TAPE

Product Code: A17012

Protech Foil Lap Tape is an aluminium foil tape coated with solvent acrylic adhesive over laminated with polyester film.

Dimension: 75mm x 50m



PROTECH GM TAPE

Product Code: A31208

Protech GM Tape is used to seal overlaps in gas membranes and accessories, and also below timber sole plates.

Dimension: 30mm x 30m



PROTECH TF TAPE

Product Code: A312161

Protech TF Tape is an extruded tape designed for use on timber frame constructions to act as a gasket where the fixings penetrate the gas membrane or starter band.

Dimension: 100mm x 15m



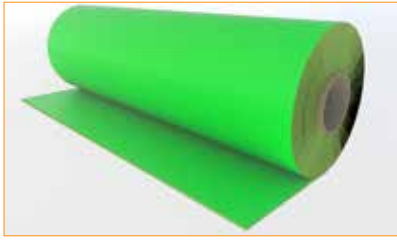
PROTECH LAGM

Product Code: A30205

Protech LAGM* (Liquid Applied Gas Membranes) is used in areas of vertical applications or in hard to treat areas.

Size: 20 litre

*non-stock item



PROTECH GM SUPER STARTER BAND

Product Code: A30215

Protech GM Super Starter Band has a dual function to provide a continuous barrier to gas which is then linked in with the horizontal Protech GM Super Membrane. Protech GM Super Starter Band crosses the cavity to prevent ingress of gas.

Dimension: 1m x 50m



PROTECH VOC FLEX STARTER BAND

Product Code: A30224

Protech VOC Flex Starter Band has a dual function to provide a continuous barrier to gas which is then linked in with the horizontal Protech VOC Flex Membrane. Protech VOC Flex Starter Band crosses the cavity to prevent ingress of gas.

Dimension: 1m x 50m



PROTECH PROTECTION BOARD

Product Code: A33050P

Protech Protection Board used to protect the integrity of the Protech Gas Membranes mainly in vertical applications.

Dimension: 3mm x 1.2m x 2.4m



PROTECH GM TOPHATS

**Product Code: A31601V
A31604V
A31605V**

Protech GM Tophats are used to detail around pipe penetrations. Tophats available to suit all Protech gas membranes. To be used in conjunction with Protech GM Flashing 150mm (A31210 / A31211).

**Sizes available: 110mm (A31601V)
130mm (A31604V)
160mm (A31605V)**

Other sizes available.



PROTECH GM CORNERS

Product Code: A13011E

Protech GM Internal & External Corners are recommended to achieve a gas tight seal and as technically a better solution. Corners available to suit all Protech gas membranes. Alternative sizes available on request.

Dimension: 150mm x 150mm x 300mm



PROVOID GULLY VENT BOX

Product Code: A31201

Provoid Gully Vent Boxes are an integral part of the Provoid Gas Venting System to act as inlets and outlets. Provoid Gully Vent Box comprises:

- Alloy Grating
- Top section - 150mm x 430mm
- Base section - 150mm x 330mm
- T-piece has a 150mm x 300mm socketed outlet to suit 110mm collector pipe



PROVOID GROUND LEVEL GAS VENT BOX

Product Code: A31203

Provoid Ground Level Vent Boxes* are an integral part of the Provoid Gas Venting System to act as inlets and outlets. This item comprises of:

- Stainless steel grate
- Top Section – 150mm x 430mm
- Base Section – 150mm x 330mm
- T-Piece 150mm x 300mm socketed outlet to suit 110mm collection pipe



PROVOID FLAT T PERISCOPIC CONNECTOR

Product Code: A33053

Provoid Flat T Periscopic Connectors* are used to connect the Provoid Gas Vent System to the Provoid Telescopic Vents.



PROVOID BTB CONNECTORS 900MM OPEN

Product Code: A31603

Provoid BTB Connectors* (Open) are used to provide a carrier to transmit going through dwarf walls.



PROVOID SOLID COLLECTION PIPE

Product Code: A31212/ A31225/A31204/
A31209

Provoid Solid Collection Pipe is used to connect the Provoid T Connectors to assist the Provoid Strip Formation System in the dilution of potential gases under the slab.

Sizes available: 110mm x 1m*
110mm x 2m
110mm x 3m*
110mm x 6m*

*non-stock item



PROVOID FLAT T GULLY CONNECTOR

Product Code: A33054

Provoid Flat T Gully Connectors are used to connect the Provoid Gas Vent System to the Provoid Gully and Ground Level Gas Vent Box.



PROVOID T CONNECTORS

Product Code: A31903

Provoid T Connectors (open) are used to connect the Provoid Gas Vent System to the inlets and outlets.



END CAPS FOR PROVOID T CONNECTORS

Product Code: A31205

End Caps are used to close off Provoid T Connectors.

110mm diameter End Caps.



PROVOID SLOTTED COLLECTION PIPE

Product Code: A31218/ A31228/A31219/ A31221

Provoid Slotted Collection Pipe* is used to connect the Provoid T Connectors to assist the Provoid Blanket Formation System in the dilution of potential gases under slab.

Sizes available: 110mm x 1m* (A31218)
110mm x 2m (A31228)
110mm x 3m* (A31219)
110mm x 6m* (A31221)



PROVOID GAS VENTING BOLLARDS

Product Code: A31206

Provoid Gas Venting Bollards* – are an integral part of the Provoid Gas Venting System to act as inlets and outlets.



PROVOID GAS VENTING STACKS

Product Code: A31216

Provoid Gas Venting Stacks* – are an integral part of the Provoid Gas Venting System to act as inlets and outlets when high level ventilation is required. This item comprises of:

- 110mm External Grade Duct
- Wall Brackets (External Grade)
- 90 Degree Bend (External Grade)
- 110mm Aspirating Cowl

*non-stock item



PROVOID HORIZONTAL ADAPTOR

Product Code: A33055

Provoid Horizontal Adaptor* allows a connection from the Provoid Periscopic Vent to the Provoid T Connectors for ventilation under the slab.



PROVOID VERTICAL ADAPTOR

Product Code: A30220

Provoid Vertical Adaptors* are 1m long sleeve to vertically extend the Provoid Periscopic Vent.

Dimension: 1m length



PROVOID PERISCOPIC VENT INCLUDING AIR BRICK (TERRACOTTA)

Product Code: A31217

Provoid Periscopic Vents* are an integral part of the Provoid Gas Venting System to act as inlets and outlets.

ALTERNATIVE AIR BRICK COLOURS:



GREY



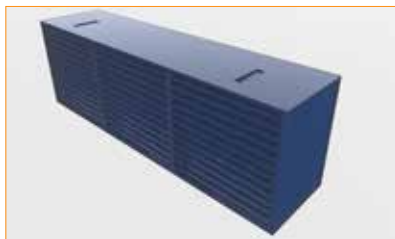
BLACK



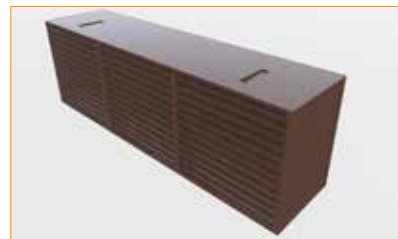
BUFF / SAND



WHITE



BLUE / BLACK



BROWN

*non-stock item



“I believe the success of the A.Proctor Group is down to a solid foundation of innovation backed up by an excellent loyal and committed team, every one of them playing an important role in our continued success. Scotland provides us with a unique platform to launch our ideas, systems and products. I am fiercely proud of this heritage and our brand.”

Keira Proctor
Managing Director

www.proctorgroup.com | +44 (0) 1250 872261
contact@proctorgroup.com

Revised March 2021

